



# Phase 1 Projects Update

## Measure A Citizen's Oversight Committee

Prepared for: Sequoia Union High School District

Prepared by: Aaron Jobson

QKA Job Number: 1395.01

## Overview

In June of 2014 the citizens of Sequoia Union High School District (SUHSD) successfully passed Measure A to fund improvements to school facilities. A major focus of Measure A was to provide additional classroom space to accommodate continued and significant growth in enrollment across the District. The need for additional classroom space is urgent with each campus needing additional learning spaces as quickly as possible. Over the summer of 2014 the four Architectural Firms selected by SUHSD, LPA, Inc., HMC Architects, Spencer Associates and Quattrocchi Kwok Architects, worked with committees at each of the four comprehensive High Schools in the District to develop a Phase 1 project to meet this need as quickly as possible. As a result of that process each campus has identified a Phase 1 Classroom Building project that is currently proceeding through the Design Process. The design of the projects has been fast tracked to meet the goal of having the new buildings occupied in the Fall of 2016. Below is a brief summary of the Phase 1 Project at each school. A more detailed summary of the projects was provided to the Board of Education on October 8, 2014.

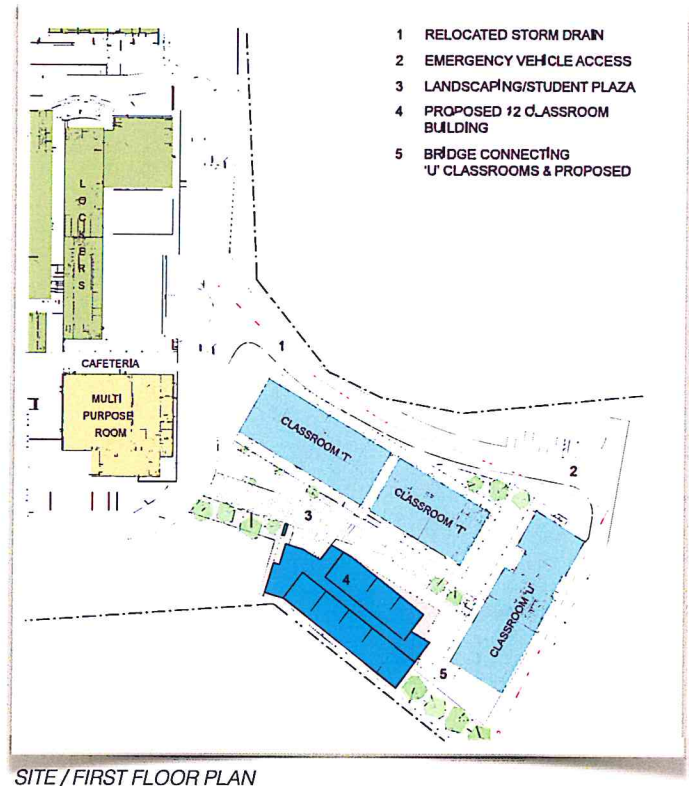
## CARLMONT HIGH SCHOOL

### HMC Architects

#### Scope of Work:

The proposed Phase 1 scope includes a new, state of the art, energy efficient 12 classroom 2 story wing to be placed at the existing parking lot near the existing T wing. The program includes six standard classrooms, six labs of various types, one flex/collaboration space, student and staff restrooms on both floors, elec/data equipment rooms, elevator, connecting bridge to U wing, and circulation. Associated with this new construction will be the removal of the two existing 'B' portables (beyond service-life) and the relocation of the two 'S' portable classrooms onto the now available pad and utilities at the 'B' portables location. Note: The Master Plan vision for the campus ultimately prescribes the permanent removal of the two 'S' portables, thus providing a net gain of 10 classrooms to the Carlmont campus after the new 2 story wing is constructed.

**Estimated Cost: \$15,441,448**



SITE / FIRST FLOOR PLAN



# MENO-ATHERTON HIGH SCHOOL

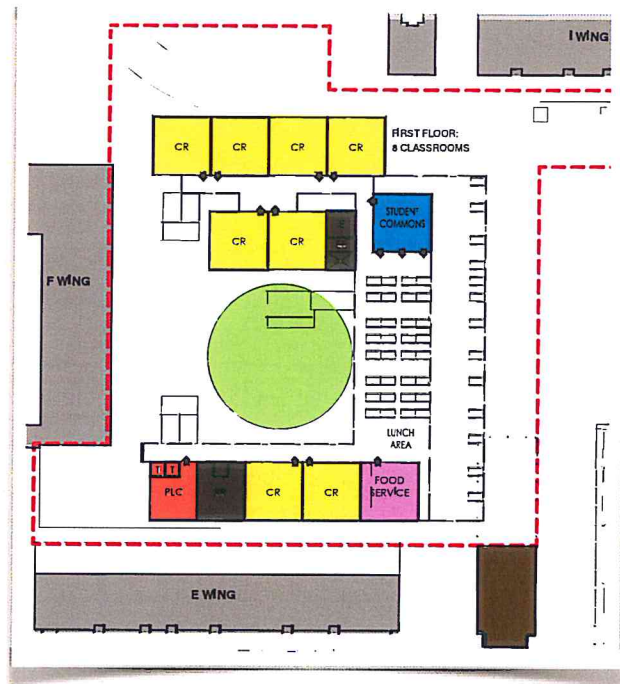
**LPA, Inc.**

## Scope of Work:

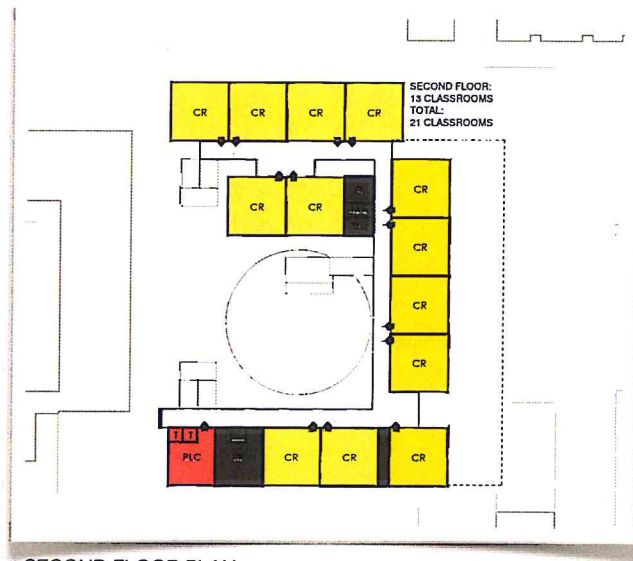
The proposed Phase One Classroom Building at Menlo Atherton High School has been planned to address the projected increase in student enrollment at the campus. The new building is to be located at the site of the current Building 'G'. In the view of the School Site Committee this is the location on campus best able to accommodate a new 2-story structure.

The (11) eleven existing modular classrooms of Building 'G' will be demolished and replaced with a new (21) twenty-one classroom 2-story building, for a net increase of (10) ten teaching stations. Additional facilities included in the program include staff workroom/collaboration spaces, student/staff toilets, a food service serving kitchen/serving windows and lunch shelter/student dining. The overall building organization has been planned in response to these program parameters, constraints of the proposed site and to facilitate future building pads for potential Long Range Master Plan program additions. Classrooms have been laid out to surround a central outdoor quad and are connected to the adjacent hard courts by a lunch shelter which spans the lower level of the building. It was a primary goal of the School Site Committee to link the courtyard with the hard courts to facilitate movement of students and common utilization of these facilities at lunch time. Aesthetically the building will be designed in response to the character of the existing Menlo Atherton High School campus.

**Estimated Cost: \$28,062,865**



SITE PLAN / FIRST FLOOR PLAN



SECOND FLOOR PLAN

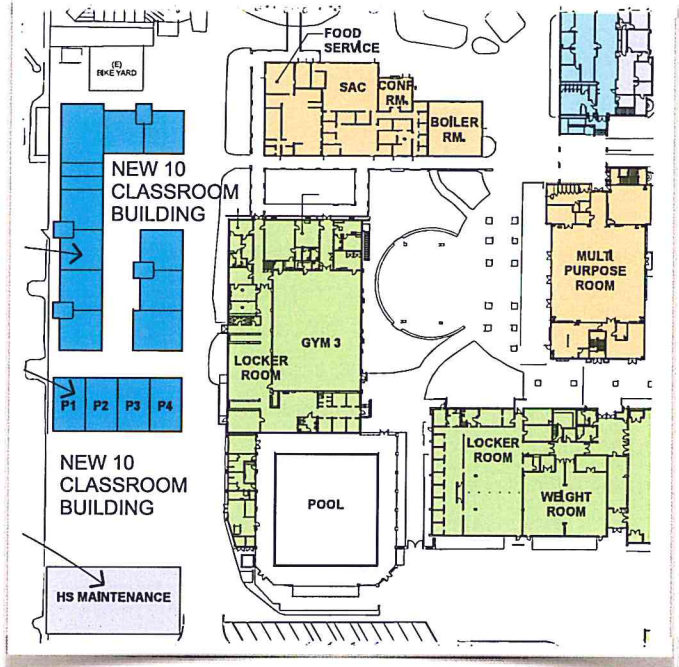
## SEQUOIA HIGH SCHOOL

### **QKA and Spencer Associates**

#### Scope of Work:

The Phase 1 project features a new single story 10 classroom building. The building will have two Science Classrooms, with the remaining classrooms generally paired so that a shared operable partition is possible. The building will also include support spaces, including the toilet rooms, small group learning spaces and science prep rooms. The portable classrooms P1-P4 will be relocated in to the south of the new building. The Phase 1 scope of work will also include renovations and improvements to the parking lot on the south side of the campus adjacent to the District Office to improve the flow of traffic for both parking and drop-and increase parking.

**Estimated Cost: \$11,547,000**



SITE PLAN / FLOOR PLAN

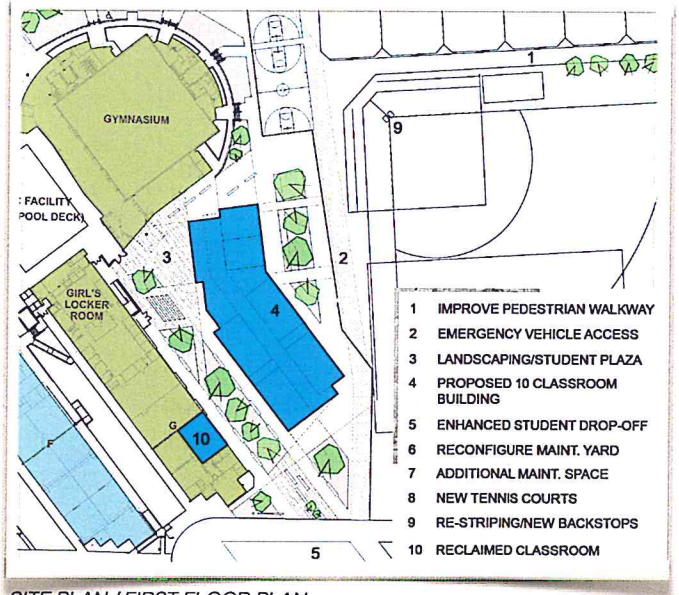
## WOODSIDE HIGH SCHOOL

### **HMC Architects**

#### Scope of Work:

The proposed Phase 1 scope includes a new, state of the art, energy efficient 10 classroom 2 story wing located on the east side of the gymnasium and north of the G wing. The program includes 6 standard classrooms, 4 labs of various types, a flex/collaboration room, student and staff restrooms, electrical/data equipment rooms, elevator, and circulation. This location has the advantage of being a more organic expansion of the current campus and allows for a relatively simple separation from the campus during construction, as well as requiring no interim housing.

**Estimated Cost: \$18,142,490**



SITE PLAN / FIRST FLOOR PLAN